



### 3. Creating and Placing the 5<sup>th</sup> Color **Raster Element – White** in **Adobe Photoshop** for use on Dark Colored Media

This tutorial will explain and demonstrate how to create a **White** Spot color in a PSD image for placement within Illustrator or InDesign using halftones to be printed on dark colored media.

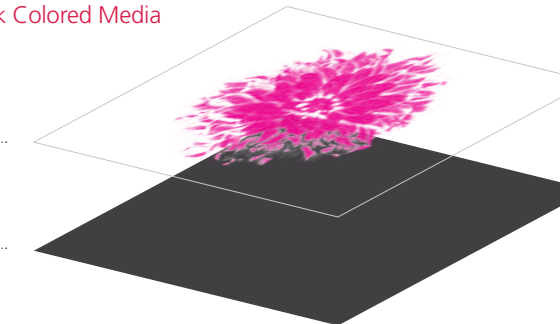
The image will need to be prepared in **Photoshop** to carry the 5<sup>th</sup> Color information into the layout.

In this example, we are using a black and white photo and printing it onto black media using White Toner. Before the file is laid out the image must be inverted and monotoned.

White halftones on Dark Colored Media

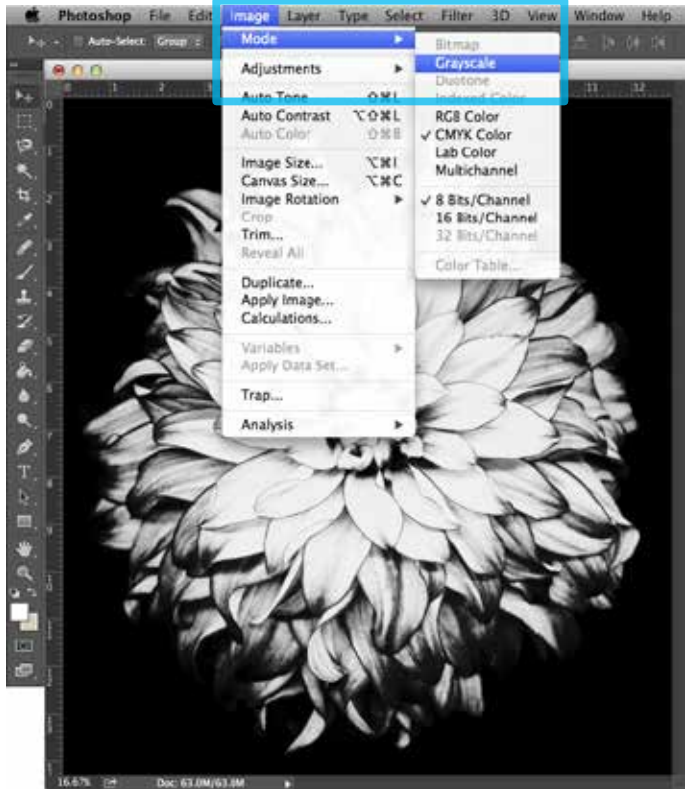
White (Single Pass)

Dark Colored Media



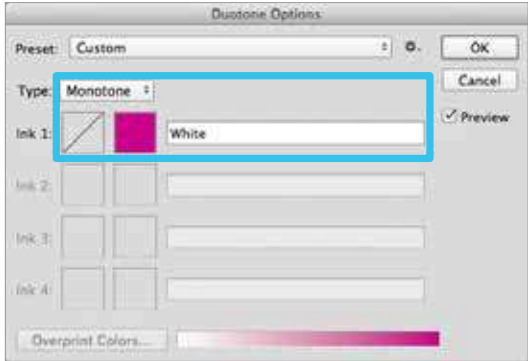
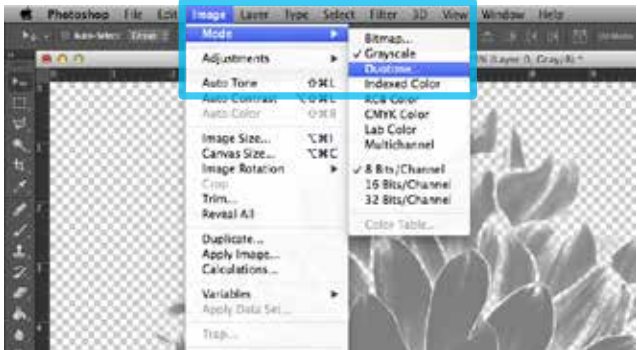
Creating the 5<sup>th</sup> Color Layer

- 1. Open the image that you would like to print with White Toner onto colored media.
- 2. Convert to Grayscale. (Image > Mode > **Grayscale**).  
*You may need to increase image contrast to improve toner coverage.*



Creating the 5<sup>th</sup> Color **Raster Element – White** in **Adobe Photoshop** for use on Dark Colored Media

- 3. Invert the image, (Image > Adjustments > **Invert**).
- 4. Convert to Duotone (Image > Mode > **Duotone**).
- 5. Select **Monotone**, under “Type.” Set Ink 1 to: CMYK: 0 | 100 | 0 and name it “**White**.”



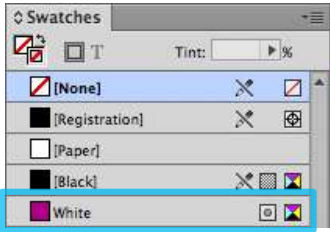
- 6. Save your file as a Photoshop **PDF** or **PSD** to retain monotone / 5<sup>th</sup> Color data.



Creating the 5<sup>th</sup> Color Layer

Now we will place the prepared 5<sup>th</sup> Color image into an Adobe InDesign layout.

- 7. Open an existing InDesign document or create a new layout.
- 8. Place the image and notice the addition of the new “White” Spot color swatch that is brought in via the monotone image.



- 9. With the image in its final position, **Re-link** with the prepared **Monotone** version.

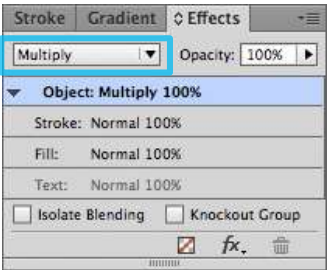


The Magenta Spot Color represents the White Toner when printing.

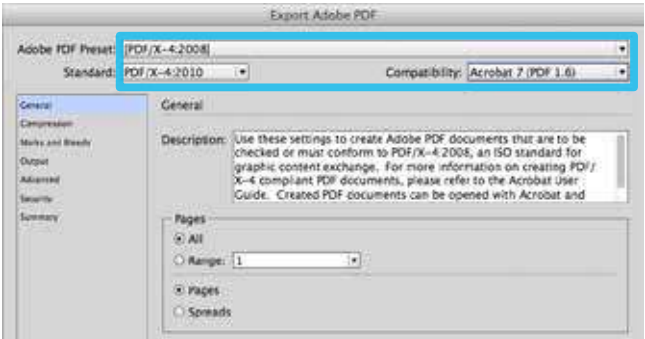
Creating the 5<sup>th</sup> Color **Raster Element – White** in **Adobe Photoshop** for use on Dark Colored Media

- 10. If printing OVER artwork, use the blend mode **Multiply**, which will overprint the image rather than knocking it out from any artwork below.

The “on-screen” result of this may make the image difficult to see, but it will print as intended.



- 11. Export / Save file as a PDF/X-4, (PDF1.6 or newer).



Refer to Section B for steps for Printing PDFs.